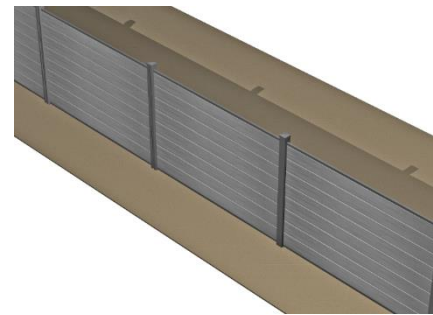


Composite Fencing Specification

Contemporary



Panel Size	1.755m (working to a 1.8m centre)
Panel Width	145mm
Panel Depth	19.5mm
Panel Finish	Lightly Brushed
Panel Weight	4kg per panel
Colours	Grey, Coffee, Charcoal (To match our contemporary decking colours)
Fence Panel Options	1.8m, 4ft and Ranch 1.2m high
Material Use	WPC Inserts and Aluminium Posts and Rails Domestic and Commercial



Fixing and Accessories

Bottom Bar



1.748mX30mmx20mm	Powder coated aluminium RAL 7022
------------------	----------------------------------

Top Bar



1.748mX30mmx20mm	Powder coated aluminium RAL 7022
------------------	----------------------------------

Base Plate



10mmx130mmx130mm	Powder coated stainless steel 7022
------------------	------------------------------------

Post



2.4mX70mmX70mm	Includes an insert and cap – please see below
----------------	---

Cap

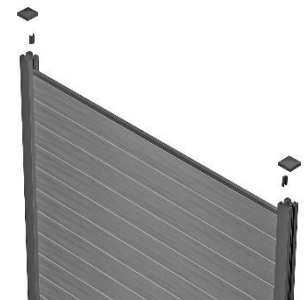


To cover the 70X70mm post	Zinc dye-cast 7022
---------------------------	--------------------

Insert



55mm long	Aluminium Powder coated
-----------	-------------------------



Composite Mix

50% Recycled Wood
45% Recycled Plastic
5% Anti UV agent, Anti-Oxidant Agent, Stabilizes, Colorants, Anti Fungus agent, Reinforcing agent



Hard wearing



Anti-slip properties



Hidden fixings



Mould and fungus resistance



Low maintenance



Splinter free



Easy to install



Various Height